

Minutes

LEARNING DISABILITY PARTNERSHIP BOARD

**MINUTES OF THE LEARNING DISABILITY PARTNERSHIP BOARD HELD ON THURSDAY
14 JUNE 2012, IN , COMMENCING AT TIME NOT SPECIFIED AND CONCLUDING AT TIME
NOT SPECIFIED.**

MEMBERS PRESENT

1 MINUTES

CHAIRMAN



INVESTOR IN PEOPLE





Buckinghamshire Learning Disability Partnership Board

Thursday 14th June 2012

Who Was There?

Co-Chair: Fred Charman - Talkback
Matthew Forbes - Talkback
Facilitator: Sue Pigott - Talkback



Peter Bolton(Talkback)

Katherine Riddell (BCC/Ridgeway)

Jeremy Fox (Talkback)

Amy Moore (BCC)

Ifti Dadd (Talkback)

Karen Tanner (Provider Rep/Radian)

Jean Rein (Talkback)

Polly Wilkinson (Connexions)

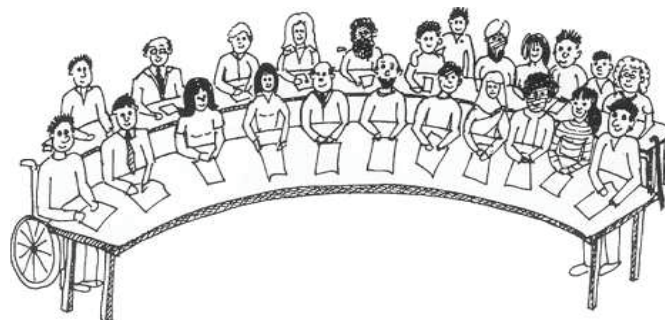
Terry Rewcastle (Talkback)

Andy Martin (Ridgeway)

Alex Britton (Talkback)

Graham Flatt (Carer Rep)

Diane Dalton (Carers Bucks/ Rep)





Welcome from the Co-Chairs

Fred and Matthew opened the meeting, welcoming everyone. Each person introduced themselves.



Apologies:

Sarah Towse	-	Talkback
Hannah Miles	-	Talkback
Jennifer Basterfield	-	Talkback
Karen Mackenzie	-	Talkback
Ainsley MacDonnell	-	BCC/PCT
Gill Manning Smith	-	BCC
Kathy Forbes	-	BCC
Nassrin Saeedi	-	REACH



MINUTES OF MEETING

Minutes of the last meeting

Co-chairs

Fred and Matthew went through the minutes of the last meeting.



Matters Arising

Services & Activities Working Group Day Opportunities pg 4 & 11

A Services and Activities Working Group meeting had taken place attended by Linda Warmbier.



Services & Activities Working Group - Hate Crime pg 10

Members had agreed that a representative from the Learning Disability Partnership Board should be on the Bucks Safeguarding Board (BSVAB).



This item was due to be addressed at this meeting but Gill Manning Smith had sent apologies. To be re-arranged.

Members decided to go through the BSVAB Annual Report and note any questions to be forwarded to Gill Manning Smith.



Matters Arising continued

Comments from LDPB - Employment/College Priority pg 12

Talkback gave their apologies and said that this action is to be carried forward.



Ridgeway LDPB Representation - page 14

Andy Martin agreed to represent the LDPB at future Stakeholder Engagement Group meetings and said he would provide a communication link via Talkback and in person at the Partnership Board meetings.



Autism Strategy - page 17

Talkback and Polly Wilkinson said that they would like to be part of the Autism Steering Group.

Action: Karen Tanner to liaise with Nassrin Saeedi and the Providers Forum to identify a representative from the Providers.

Sue Pigott to contact Ojalae Jenkins with names of representatives and to enquire whether the National Autistic Society are involved.



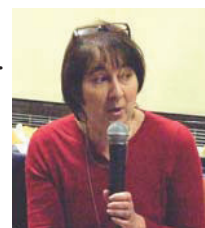
Membership/Distribution List - page 17

The "Membership Wheel" was taken to the Executive Partnership Board but it was not discussed. This will be carried forward.

The minutes were agreed by the members.

Buckinghamshire Safeguarding Vulnerable Adults Board (BSVAB) Annual Report - Gill Manning Smith

Apologies were received from Gill Manning Smith. Members agreed to discuss the BSVAB Annual Report and submit any questions to Gill Manning Smith. As some members hadn't read the document it was agreed for all to do so by the next meeting.

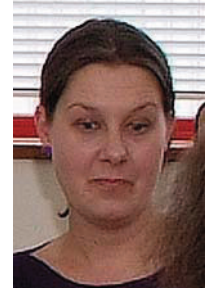


Questions from members:

1. Who is the Ethnic Minorities representative on the Board?
 - *Multi Cultural Centre*
 - *Race Equality Centre*
2. At the Executive Partnership Board, Gill said that it was important that the different Partnership Boards link into the BSVAB. She said that the SDS Reference Group would be the link but we need to find out how the Learning Disability Partnership Board can link in efficiently and how we can find out what is happening within the BSVAB?
3. Dignity In Care - page 21. It states that:
"The 10 point dignity challenges strives to ensure that all older people receiving care are treated with respect and dignity"
Should this not apply to all groups of vulnerable adults - it is misleading?
Katherine Riddell said that it is being applied to all the Partnership Boards and people receiving care in Bucks and that Gill Manning

Buckinghamshire Safeguarding Vulnerable Adults Board (BSVAB) Annual Report - Gill Manning Smith continued

Smith is keen to work with vulnerable adults and hear their experiences. Areas of particular concern are, prevention and taking risks working together.



Action: Members to email Sue Pigott (sue.pigott@talkback-uk.com) with any other questions for Gill.

Services & Activities Working Groups Update Sue Pigott, Talkback

Since the last Learning Disability Partnership Board there have been 7 working group meetings. How and where the groups meet has had to be reviewed whilst working through this period of change. The groups are community based and in Burnham, Beaconsfield, High Wycombe and Amersham.



Issues raised by people with a learning disability are:

- Weight control - without going out to a day service people are not so active.
- The closure of Day Centres is very upsetting.



Services and Activities Working Groups continued

Sue Pigott - Talkback

- Some Day Centres are now very crowded as people from different centres have been moved...this is causing stress and anxiety.
- Feelings of loneliness.
- Finding affordable activities and having a reason to get out of bed.
- Having to accept changes that don't make sense.
Eg. In one case, no longer being able to do voluntary work
- Missing people who they have known for years.



On a positive note, people with a learning disability did say:

- That it helps to meet up for a coffee and talk about all the changes.
- They like to be in a place where everyone goes.
- They have met a few new people since leaving the Day Centre.
- They want to go to more meetings so that they can:
 1. Meet new people
 2. Get out of the house
 3. Feel included in what's going on

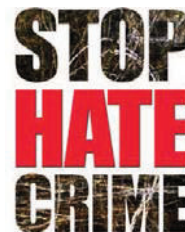


Services and Activities Working Groups continued

Sue Pigott - Talkback

There are currently 4 LDPB priorities being addressed through the Service and Activity Groups:

- Day Opportunities
- Health
- Hate Crime/Keeping Safe
- Travel

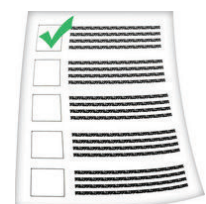


As part of the LDPB work plan members had agreed it would be a priority to follow a local agenda. People with a learning disability said 'that it is important that the Partnership Board deal with what is happening around them and not what is happening further away.'

DAY OPPORTUNITIES

Linda Warmbier updated the services and activities group on the current situation with the Day Opportunities programme.

As Linda is unable to attend the Board until the August meeting she requested that members of the Partnership Board put together any questions they would like answering and she would aim to respond at the next meeting.



Services and Activities Working Groups continued

Sue Pigott - Talkback

There are 5 main areas, these are:

1. **Property**

Buildings

2. **Staffing**

People who work in the buildings

3. **Assessment and Brokerage**

Seeing what you need and having someone to help

4. **Market Shaping**

Making sure there is something for everyone

5. **Care Procurement**

Different providers running the day services

There is a project leader for each of these areas.

Property

There will be 6 Day Opportunity buildings. These will be based in:

1. High Wycombe
2. Aylesbury
3. Amersham/Chesham
4. Burnham
5. Beaconsfield
6. Buckingham



Services and Activities Working Groups continued

Sue Pigott - Talkback

Each building will be designed by architects. Some will be adapted and redeveloped and others rebuilt.

Staffing

Due to the changes, staffing has had to be looked at. This has meant redundancies, changes to hours of work and job roles.

Some people are having to go to different centres for a period of time until their new centre has been built or adapted. An example of this is people going from Endeavour (Chesham) to Seeleys (Beaconsfield). People using services will use each others' buildings until the new buildings are ready.

Assessment and Brokerage

This looks at what services people are eligible for and finding community projects for people to be assessed and involved in.

This should have been completed by May 2012.

Market Shaping

This makes sure that there are enough activities and choices for everyone.

Care Procurement

Other Services Providers will be running the new Day Services. The tender process for this has been put on hold for a couple of months.

Services and Activities Working Groups continued

Sue Pigott - Talkback

Comments

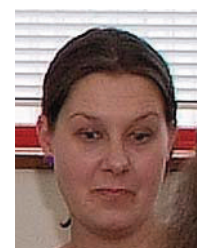
Graham said that this is a very difficult time for everyone as there is so much change. He feels that the Council have not been honest throughout the process and referred to the situation with Buckingham Day Centre. After being told that Well Street was not fit for purpose last year, they have now been told that it is the ideal building and architects will be adapting it.



He said that people have different needs and this could be a big problem in a building such as Well Street. It is most important that people's personal space is recognised. Graham said that this process is going to require very experienced staffing and people will need more support than they are receiving at present.

He wished that the Council would have been more honest with regard to Well Street and have admitted the financial problems in a more open and sincere way.

Katherine said that the 'Market Shaping' is looking at making sure that the different groups of people are being provided for. She said that there are a lot of positives coming out of this process.



Polly said that young people are concerned, they want education/activities 5 days a week which they should have a right to. It is a great cause of concern for parents as they are not being told much.



Services and Activities Working Groups continued

Sue Pigott - Talkback

Talkback asked if anyone knew what would be happening with Thrift Farm.

Graham said that a letter had been received from Rachael Rothero stating that Thrift Farm would continue for now. 90+ people use Thrift Farm and currently there is no alternative. He said that Thrift Farm is about working together and engaging with the Community. It fulfils a very important function which couldn't be fulfilled by doing other jobs around the County in Day Centres.



Questions for Linda Warmbier from members of the Learning Disability Partnership Board

1. What buildings will be used by people whose Day Centre has shut or is being redeveloped?
2. There are real concerns regarding people's different needs and support requirements all in one building. An honest attitude as to the real reason behind all the changes would be better appreciated.
3. What other services are available in the Buckingham area?
4. What is the provision for young people leaving school? What are they being told?
5. What is happening to Thrift Farm long term?
6. Will providers be expected to deal entirely with the support of all people in the Day Centres?

Services and Activities Working Groups continued

Sue Pigott - Talkback

7. During the design stage, there were 'grand' pictures of the new centres and people were told that other people (who don't receive a service there) would be encouraged to use the new buildings to meet with their friends for a coffee. Will this still be possible?
8. Who will oversee the whole service in the building? Will it be a consortium of different providers?
9. What can the Learning Disability Partnership Board do to support this process?

Action: Questions to be forwarded to Linda Warmbier. Email any further questions to Sue Pigott (sue.pigott@talkback-uk.com) (SP).

HEALTH

A "Good Health Care For All" guide written by Alison Giraud-Saunders has recently been published. Talkback will be attending the launch on 3rd July and would like to take any feedback from members of the Partnership Board.



Action: Alex to forward document via email to all members. Any feedback to be emailed to Sue at Talkback before 3rd July (AB & SP).

Jean to contact Alison Giraud-Saunders to invite her to a future Partnership Board meeting (JR).

Services and Activities Working Groups continued

Sue Pigott - Talkback

Champion GP

Ainsley reported to the Health Services and Activities Group that we now have a potential champion GP for Learning Disabilities who may be able to provide 2 hours a week.



Action: Ainsley to co-ordinate (AM).

Development of Treat Me Not My Knee

Talkback have recently met with the Ambulance Service to discuss developing the Treat Me Not My Knee training onto DVD format so it can reach more healthcare providers.



Action: Development of the Treat Me Not My Knee training to reach other hospital/ambulance staff. DVD development under discussion. Funding needs to be secured (Talkback/Health Services & Activities Group).

Health Checks, Health Passports and Health Action Plans

This is an ongoing piece of work for the Health Services and Activities Group.

Action: To be addressed at the next Health Services & Activities Group meeting.

Services and Activities Working Groups continued

Sue Pigott - Talkback

Diane Dalton said that it was important for Carers to make sure they are registered with their GP's. Money is available from the PCT for Carers dealing with stress and anxiety.



HATE CRIME/KEEPING SAFE

The Keeping Safe Services and Activities Group want to develop the Safe Place Scheme in Bucks.

A focus group needs to be set up to include:

- Person with a learning disability
- Police
- Advocacy
- Safeguarding
- Communications
- Trading Standards
- Providers of Support (Day Opportunities & living)
- Shopping Centre Management
- BCC, Community Safety - Cath Marriott

**STOP
HATE
CRIME**



Be safe

The first meeting would take place at the end of July, beginning of August.

Action: Please sign up to help carry this piece of work forward (PB members). Karen Tanner to take to Provider Forum to nominate a provider.

"People are using the Community more...let's make sure they are safe".

Services and Activities Working Groups continued

Sue Pigott - Talkback

TRANSPORT

This group have not met since the Transport strategy in March.



Executive Partnership Board Update

Talkback

The Executive Partnership Board (EPB) is still in its development stage. There have been 3 meetings so far. There is lots of positive interest in making it work. The next meeting is on Monday 17th September 2012. Members were asked if there were any items they would like to be addressed or added to the Agenda for the next EPB meeting.



Suggestions as follows:

1. The Learning Disability Partnership Board Membership Wheel to be presented
2. How will the EPB manage the joint priorities of each of the Partnership Boards and not lose sight of the specific priorities relating to each group? The LDPB's workplan is focused on local issues. The other Partnership Boards tend to have a more national focus.

Executive Partnership Board Update continued

Talkback

3. Find out how the Partnership Boards are working on the changes in Day Services.
4. Look at communication and sharing information across the different Partnership Boards.
5. Safeguarding.

**Action: These items to be raised at the next EPB
(Fred Charman/Talkback/Ainsley McDonnell)**

Transition Pathway

Amy Moore

Amy is the Joint Commissioner for Transitions. She introduced herself to members and explained the Transition Pathway. She said the aim is to improve the journey into adulthood for young people with disabilities.

They have been working on a transition pathway to show young people and their families the journey young people will take.

A set of rules have been put together for paid staff to look at how they can best work together.

An information pack has been put together.

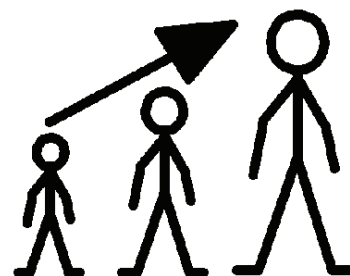
More local college courses will be available for young people with learning disabilities.



Transition Pathway continued

Amy Moore

Schools are being encouraged to use Person Centred Reviews and more Connexions Services will become available for people aged 18-25 years.



There will be more staff training.

She said that everyone should be clear about what they are doing and what other people should be doing.

Comments

Diane Dalton said that lots of people don't realise that when they reach 18 years of age, things will change. She said it would help if Carers had a clearer idea of what was going on and what would happen in the future. Young people leave school not knowing what is in place. It is really important to have clear communication with the family, this should be ongoing without gaps in the provision. Young people aren't assessed to see if they need to be placed with the Learning Disability Team until they are 18.



Polly Wilkinson said that the transition process should start earlier than it does currently. She feels that 17/18 years of age is too late especially for those moving back into County. It doesn't give families enough time for decisions to be made.



Amy explained that they have agreed that young people will be assessed at 17 years and the pathway will allow young people to prepare for adulthood.

Transition Pathway continued

Amy Moore

The Board highlighted the need for an Education/Employment Services and Activities Group and asked Amy if she would be involved.

Action: Co-ordinate Education/Employment Services and Activities group to include Amy Moore (Talkback).

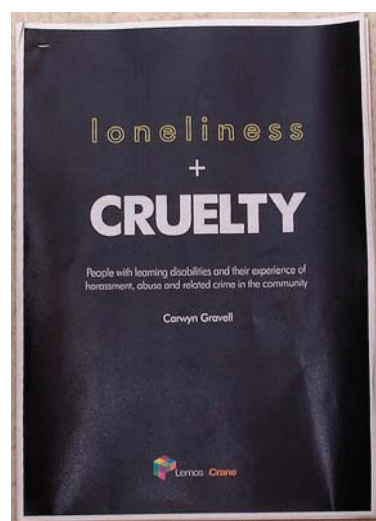
Amy's email address (amoore@buckscc.gov.uk) to be forwarded to members should they require any more information (AB).

Social Inclusion/Exclusion

Partnership Board Discussion

The document Loneliness and Cruelty has recently been published. It was produced by the Foundation for People with Learning Disabilities. It looks at people with a learning disability and their experience of harassment, abuse and related crime in the community.

Learning Disability Partnership Board members acknowledged that this document highlights issues that are trying to be overcome in Bucks.



Action: Document to be forwarded to members (AB). To be added as an Agenda item at the next Partnership Board meeting for further discussion.

Social Inclusion/Exclusion

Partnership Board Discussion

Loneliness and abuse seems to be a real problem for people and Talkback often hear of similar experiences from people living in Bucks. Some of these stories were brought



to the Partnership Board for discussion. Members divided into 2 groups and each group chose a story to evaluate and discuss.

Comments

“Isolation seems to be a real problem.”

“I found this very challenging.”

“I enjoyed that...working in small groups.”

“This exercise was definitely thought provoking.”

“I like working in a small group, get a chance to talk more.”

“It’s good to put yourself in a situation like this and try to solve it.”



Any Other Business

Next Meeting

The next meeting will be held on Thursday 2nd August. It was decided that at this meeting, members will look at what has been achieved so far and update the workplan.



BuDS

BuDS has secured representation on Thames Valley Police's Independent Advisory Group. They will use this opportunity to represent the interests of disabled people in Bucks, particularly with regard to the abuse or assault of disabled people because of their disability. They would like to encourage members and their wider networks to let them know of any incidents in which a disabled person has suffered verbal abuse or physical assault because of their disability.



All information passed to BuDS will be kept confidential.

Information should be sent to info@buds.org.uk or sent via the form on their website <http://buds.org.uk/site/contact>.

Action: Email to be forwarded to members (AB).

Any Other Business

Buckinghamshire LiNK

All the Partnership Boards have been informed of the changes that have recently taken place within Buckinghamshire LiNK. As of 1st April 2012, Community Impact Bucks has become the LiNK host support contractor for Buckinghamshire.



They have been appointed for a 12 month transition period to support the LiNK during the period leading up to the Local Healthwatch which is currently scheduled to commence in April 2013.

The Line Project Manager is Bridget Wythe. She can be contacted on [07990 756139](tel:07990756139), on their general enquiry line [08453 890389](tel:08453890389) or by email bridget.wythe@communityimpactbucks.org.uk.

Next meeting

Date: Thursday 2nd August 2012

Time: 11.45am to 3pm

Where: Fremantle
Woodley House
64-65 Rabans Close
Aylesbury
Bucks HP19 8RS

Details: Working lunch (bring your own)
Tea & coffee available (donations please)